

INTRODUCING



*An Embrace of Tourism &
Contemporary Living*



Edo-Ogwashi-Uku, Asaba



Freehold



NATURE PARK



ARTIFICIAL LAKE



POLO PITCH
& HORSE STABLE



MINI GOLF
COURSE



SWIMMING
POOL



GIANT
CHESSBOARD

SPECIAL FEATURES








About us i

Award-winning real estate company, PWAN Plus is the 2023 best performing affiliate of the PWAN Group, the first and foremost real estate network marketing company in the world.

With a reputation for excellent service delivery, PWAN Plus is through her budget-friendly estates actualizing the homeownership dream of many.

PWAN Plus is the owner of Cedarwood estates

follow us:      [http://](http://@cedarwoodluxury.com) @cedarwoodluxury.com | pwanplus.ng



The Horse Trio

Most suitable for battle, horses are fearless. The sculpture of the trio represent our brand, realtors and subscribers who inspire, promote and embrace innovation. It takes fearlessness to create or embrace change.

The Triple Walls

As platforms for the horse trio, each wall represents physical security, structural integrity and investment security.

The Granites

In modernity, the granite is associated with balance, harmony and stability. These three reflect the sense of assuredness, community and reliance that comes with a good property investment.

Bricks

Each brick in estate frontal design captures individuality. Together it symbolizes community. Beyond these, the bricks indicate non-combustion, sustainability and aesthetics—all of which reflect the characteristics of intentional real estate development.

Ornamental Plants

Each plant is a reminder of the unending appreciation of sought-after real estate, and ultimately, the need to protect life through shelter.

White Stones


The collection of white stones is significant of new beginnings—of individuals and families rewriting their history by choosing and promoting peaceful coexistence within a nature inspired community

Human Heart Fence Art

The human heart is the nucleus of life. It reminds us that our clients are the heartbeat of our business. Hence, our commitment to serve YOU optimally—always.



Mascot & Symbols

POWERED BY 

Billionaire Features



NATURE PARK

Man-made habitat for rare plants and game reserve—perfect for the collection of brand new memories



ARTIFICIAL LAKE

Artfully designed lake for canoeing, controlled fishing and ultimate relaxation



POLO PITCH & HORSE STABLE

Pony stalls, mini polo pitch for the billionaire horseback game experience



MINI GOLF COURSE

Exclusive golf arena for recreation, exercise and the development of great friendships



SWIMMING POOL

Aesthetic pool with soothing mineral water for the perfect swimming experience



GIANT CHESSBOARD

Expansive chess floor with giant pieces for record-breaking strategy games

Other Features

30 X 1012 ft Major Road
Underground Drainage System
Plot-By-Plot Water Connection
Steady Power Supply
Solar Street Lighting
CCTV & Periodic Drone Surveillance
QR Code Visitor Access
Manned Guarding
Avenue Plantation
Children Park
Sports Complex



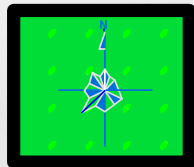
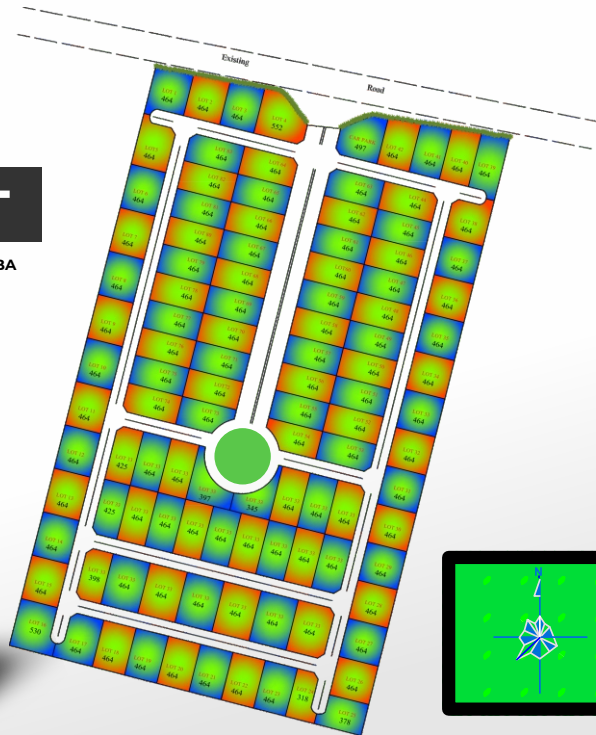
LAYOUT



EDO-OGWASHI-UKU, ASABA



FREEHOLD



EARLY-BIRD PRICE

N7.5M

464
SQM

N12M

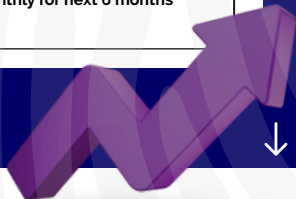
DEED &
SURVEY
INCLUSIVE

ACTUAL PRICE



PAYMENT STRUCTURE

LAND SIZES	3 MONTHS (OUTRIGHT)	6 MONTHS INSTALMENT
464SQM	ACTUAL PRICE: NN12,000,000 EARLY BIRD PRICE: N7,500,000 Initial Payment: N4,000,000 Instalment: N2,666,667 Monthly for next 3 months <small>*Early-Bird Discount Applies to Outright Payment Plan Only</small>	N13,800,000 Initial Payment: N5,000,000 Monthly Instalment: N1,466,667 Monthly for next 6 months





Umu Ezeagwu Community,
Opp. Admiralty University,
Ibussa, Asaba

FREEHOLD



Amochi Quarter,
behind Wictech Industries,
Ogbanem, Asaba

FREEHOLD



EDO-OGWASHI-UKU,
ASABA

FREEHOLD



EDO-OGWASHI-UKU,
ASABA

FREEHOLD



EDO-OGWASHI-UKU,
ASABA

FREEHOLD



EDO-OGWASHI-UKU,
ASABA

FREEHOLD



EDO-OGWASHI-UKU,
ASABA

FREEHOLD



PROMO PRICE N5.5M
ACTUAL PRICE: N6.8M

OMITSHA EXPRESSWAY,
BEHIND LUBBERS
MANUFACTURING COMPANY,
OGBAKU, OWERRI

FREEHOLD



PROMO PRICE N2M
ACTUAL PRICE: N2.5M

OGBOR-HILL, ABA

REGISTERED
SURVEY & POWER
OF ATTORNEY



PROMO PRICE N4.5M

OSIOSIMA, ABA

REGISTERED
SURVEY & POWER
OF ATTORNEY

Other Offers

ALL PAYMENT SHOULD BE MADE
IN FAVOUR OF:
PILAN PLUS BUSINESS
CONCERNS LTD-SPECIAL



1220546996



**LAGOS OFFICE**

2nd Floor, Trimatrix Towers,
Lake View Park 1 Estate,
Berger Bus Stop, Lekki-Epe
Expressway, VGC-Ajah,
Lagos State.

ASABA OFFICE

1 Stella Omu Crescent,
off Federal High Court,
GRA, Okpanam Road, Asaba.

ABA OFFICE

14 Oron Road,
Adjacent Aba North LGA
Secretariat, GRA, Aba,
Abia State.

Follow us:  @cedarwoodluxury  PWAN PLUS  PWAN PLUS

<http://pwanplus.ng> | cedarwoodluxury.com

POWERED BY

